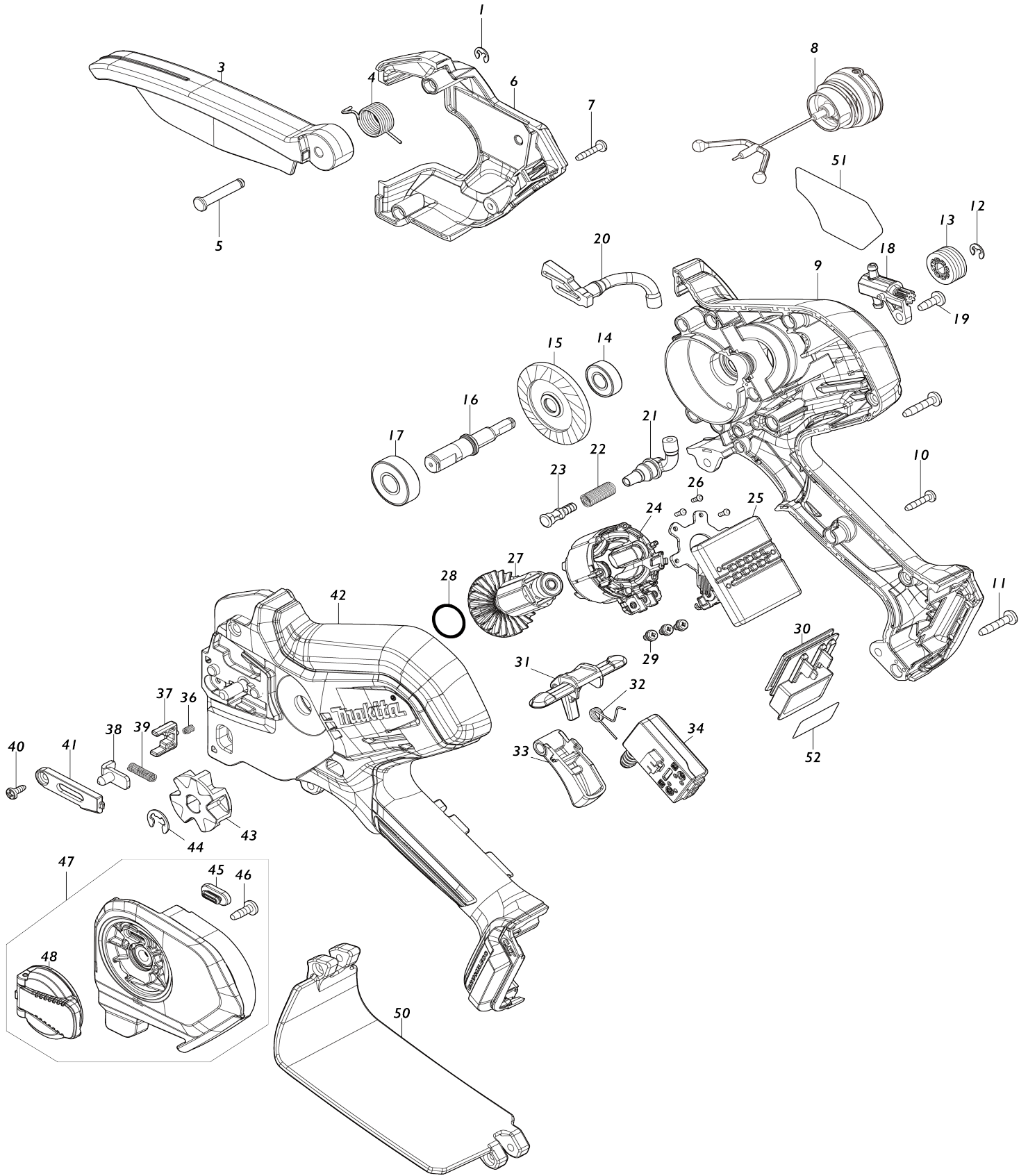


Model No. UC100D 100MM CORDLESS CHAIN SAW



| | | | | | | |
|-------|-----------|------------------------------------|---|---|---|--|
| 039 | 232787-8 | Ressort boudin 4 | | 1 | | |
| 040 | 266492-5 | Vis taraudeuse à tête bombée 3X 8 | | 1 | | |
| 041 | 413M03-7 | Couvercle | | 1 | | |
| 042 | 183Y30-7 | HOUSING SET | | 1 | | |
| C10 | 263002-9 | Cheville caoutchouc 4 | | 2 | | |
| C20 | 347A70-7 | Protection de réservoir | | 1 | | |
| D10 | | INC. 9 | | | | |
| 043 | 227947-5 | Pignon entrain 7 | | 1 | * | |
| 043-1 | 1911W5-9 | Jeu de pignons 7 | O | 1 | | |
| 044 | 961013-5 | Circlip (EXT) E-7 | | 1 | | |
| 045 | 422970-7 | Rondelle isolante | | 1 | | |
| 046 | 266427-6 | Vis taraudeuse à tête bombée 4X 12 | | 1 | | |
| 047 | 136914-8 | SPROCKET COVER ASS'Y | | 1 | * | |
| D10 | | INC. 45,46,48 | | | | |
| 047-1 | 137203-4 | SPROCKET COVER ASS'Y | < | 1 | | |
| D10 | | INC. 45,46,48 | | | | |
| 048 | 141M77-5 | Écrou complet | | 1 | * | |
| 048-1 | 1410X3-4 | NUT COMPLETE | < | 1 | | |
| 050 | 141M76-7 | Protège-main arrière complet | | 1 | | |
| C10 | 8062G7-3 | CAUTION LABEL | | 1 | | |
| 051 | 8584L7-6 | UC100D NAME PLATE | | 1 | | |
| 052 | 8584M5-7 | UC100D SERIAL NO. LABEL | | 1 | | |
| A01 | 1910W0-3 | Ensemble 4 du guide-chaîne | | 1 | * | |
| A01-1 | 1910W0-3 | Ensemble 4 du guide-chaîne | O | 1 | | |
| A03 | 199897-3 | Jeu de graisseur d'huile | | 1 | | |
| A04 | 413M40-1 | Fourreau 125 | | 1 | | |
| A05 | 1910V6-4 | Ensemble 4 de chaîne | | 1 | | |
| E01 | 807950-8 | Étiquette sonore 95DB | | 1 | | |
| A06 | 456128-6 | Couvercle de batterie | | 1 | | |
| A07 | ***DC10WD | DC10WD BATTERY CHARGER | | 1 | | |
| D10 | | COMPO-PARTS | | | | |
| A08 | 197396-9 | Batterie 1000 BL1021B | | 1 | | |
| A02 | 198457-8 | Jeu de lime | | 1 | * | |
| A02-1 | D-70948 | FILE HOLDER SET 4.0MM(5/32") | O | 1 | | |

Veuillez indiquer les pièces n ° lorsque votre commande.

Date d'impression 17/06/2024