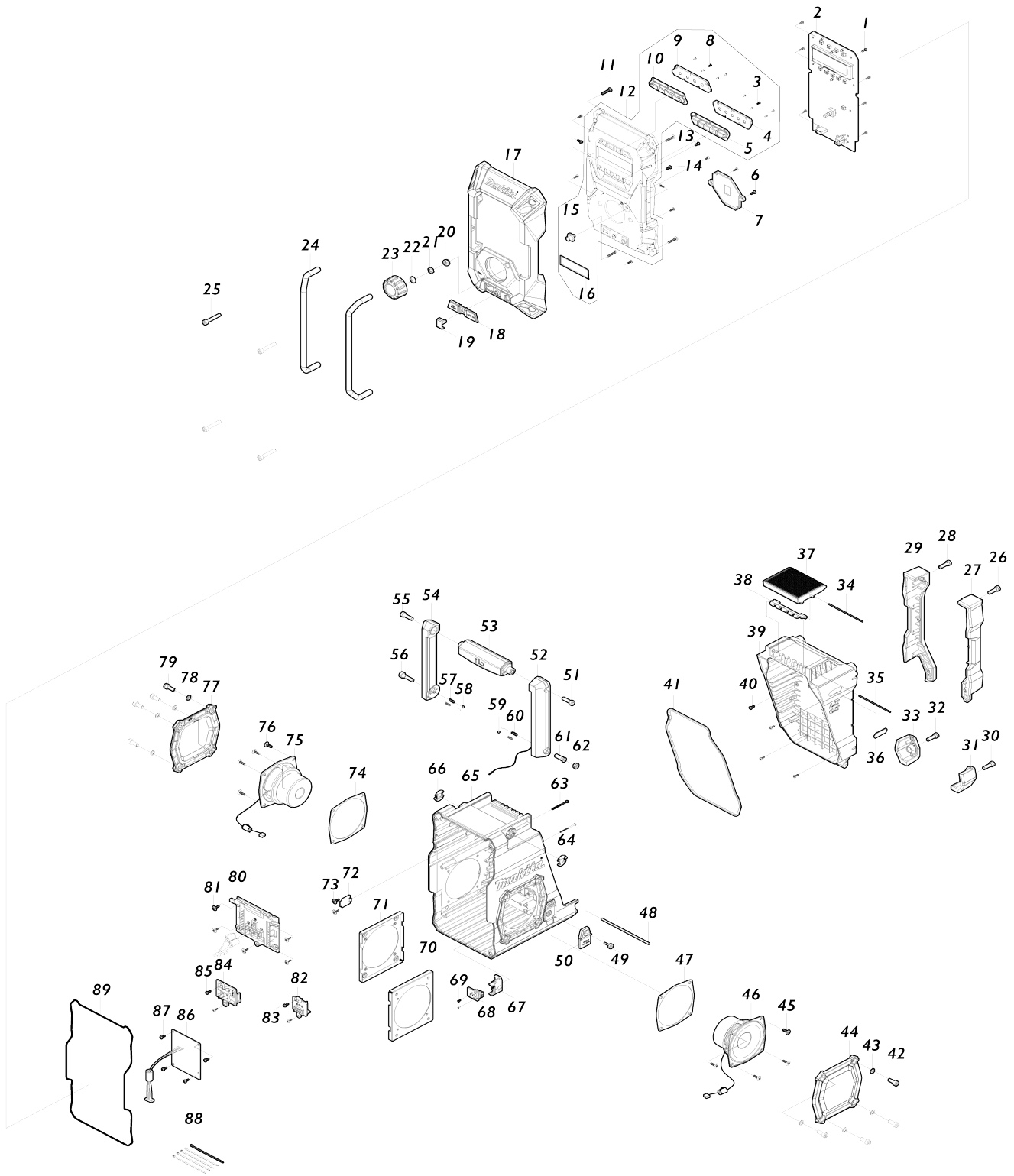


Model No.MR004G JOB SITE RADIO



Model No.MR004G JOB SITE RADIO

Numéro d'article	N ° de pièces	Description	Interchangeabilité	Q'ty	Nouvelle / ancienne	Note 1	Note 2
001	SE00000521	SCREW PTB 3X8(ZK) 29S16308001		7			
002	SE00000950	PCB A ASS'Y		1			
003	SE09090011	SCREW 1.7		5			
004	SE00000909	PRESET KEY HOLDER		1			
005	SE00000910	PRESET KEY		1			
006	SE00000521	SCREW PTB 3X8(ZK) 29S16308001		2			
007	SE00000911	KNOB LENS HOLDER		1			
008	SE09090011	SCREW 1.7		5			
009	SE00000907	POWER KEY HOLDER		1			
010	SE00000951	POWER KEY		1			
011	SE09064161	SCREW M4X16		4			
012	SE00000952	FRONT CABINET ASS'Y		1			
D10		INC. 3,4,5,8,9,10,15,16					
013	SE00000854	SCREW PTF 3X6(ZK)		2			
014	SE00000521	SCREW PTB 3X8(ZK) 29S16308001		7			
015	SE00000855	RUBBER KEY		1			
016	SE00000856	FRONT PACKING		1			
017	SE00000953	FRONT BUMPER		1			
018	SE00000916	JACK RUBBER COVER		1			
019	SE00000860	JACK COVER		1			
020	SE00000754	EN/SW WASHER		1			
021	SE00000755	EN/SW NUT		1			
022	SE21B1110A	ROTARY KNOB RING		1			
023	SE00000861	ROTARY KNOB(BLK)		1			
024	SE00000862	FRONT BAR		2			
025	SE00000709	SCREW PTHE 6X33(CR)		4			
026	SE09176166	HEX SCREW M6X16		1			
027	SE00000864	BATTERY BUMPER-R		1			
028	SE09176166	HEX SCREW M6X16		1			
029	SE00000863	BATTERY BUMPER-L		1			
030	SE09176166	HEX SCREW M6X16		1			
031	SE00000866	REAR BUMPER-R		1			
032	SE09176166	HEX SCREW M6X16		1			
033	SE00000865	REAR BUMPER-L		1			
034	SE00000868	PIN D2X84		1			
035	SE00000539	PIN D2X77 2100B300200		1			
036	SE00000872	XGT PLATE		1			
037	SE00000917	LOCKER COVER		1			
038	SE00000536	LOCKER HINGE 3300B30000010		1			
039	SE00000920	BATTERY COVER ASS'Y		1			
040	SE00000521	SCREW PTB 3X8(ZK) 29S16308001		4			
041	SE00000873	BATTERY COVER PACKING		1			
042	SE9076146A	HEX SCREW M6X14		4			
043	SE024J9070	PACKING		4			
044	SE00000874	SPEAKER PANEL ASS'Y		1			

045	SE09090023	SCREW M4X12		4		
046	SE00000955	RIGHT SPEAKER ASS'Y		1		
047	SE00000876	SPEAKER PACKING		1		
048	SE00000877	BATTERY COVER FIXER PIN		1		
049	SE00000404	SCREW PTHE 3X14(CR)		1		
050	SE00000878	DC JACK COVER		1		
051	SE00000176	SCREW PTHE6X20(CR)		1		
052	SE00000939	HANDLE R ANT DAB		1		
053	SE00000881	HANDLE BAR		1		
054	SE00000879	HANDLE L		1		
055	SE00000176	SCREW PTHE6X20(CR)		1		
056	SE00000715	SCREW PTHE 6X17(CR)		1		
057	SE00000184	SPRING		2		
058	SE09994007	STEEL BALL		2		
059	SE09994007	STEEL BALL		2		
060	SE00000184	SPRING		2		
061	SE00000716	SCREW PTHE 7X16(CR)		1		
062	SE00000717	SCREW PTHE 10.8X4.5(CR)		1		
063	SE00000445	SCREW PTB 3X45(NI)		2		
064	SE00000888	HANDLE SUS-PLATE(R)		1		
065	SE00000956	REAR CABINET ASS'Y		1		
066	SE00000889	HANDLE SUS-PLATE(L)		1		
067	SE00000929	DC JACK HOLDER		1		
068	SE00000958	PCB F ASS'Y		1		
069	SE09090011	SCREW 1.7		2		
070	SE00000892	SPEAKER HOLDER		1		
071	SE00000892	SPEAKER HOLDER		1		
072	SE00000785	PCB G ASS'Y		1		
073	SE00000193	SCREW 3X10		2		
074	SE00000876	SPEAKER PACKING		1		
075	SE00000963	LEFT SPEAKER ASS'Y		1		
076	SE09090023	SCREW M4X12		4		
077	SE00000874	SPEAKER PANEL ASS'Y		1		
078	SE024J9070	PACKING		4		
079	SE9076146A	HEX SCREW M6X14		4		
080	SE00000959	XGT TERMINAL		1		
081	SE00000193	SCREW 3X10		5		
082	SE00000960	CXT TERMINAL		1		
083	SE00000521	SCREW PTB 3X8(ZK) 29S1630800 1		2		
084	SE00000961	LXT TERMINAL		1		
085	SE00000521	SCREW PTB 3X8(ZK) 29S1630800 1		2		
086	SE00000962	PCB D+M ASS'Y		1		
087	SE00000521	SCREW PTB 3X8(ZK) 29S1630800 1		4		
088	SE00000195	W/TIES 100MM		5		
089	SE00000899	REAR CABINET PACKING		1		
A01	SE00000679	AC ADAPTER (CE)		1		

Veuillez indiquer les pièces n ° lorsque votre commande.

Date d'impression 07/06/2024