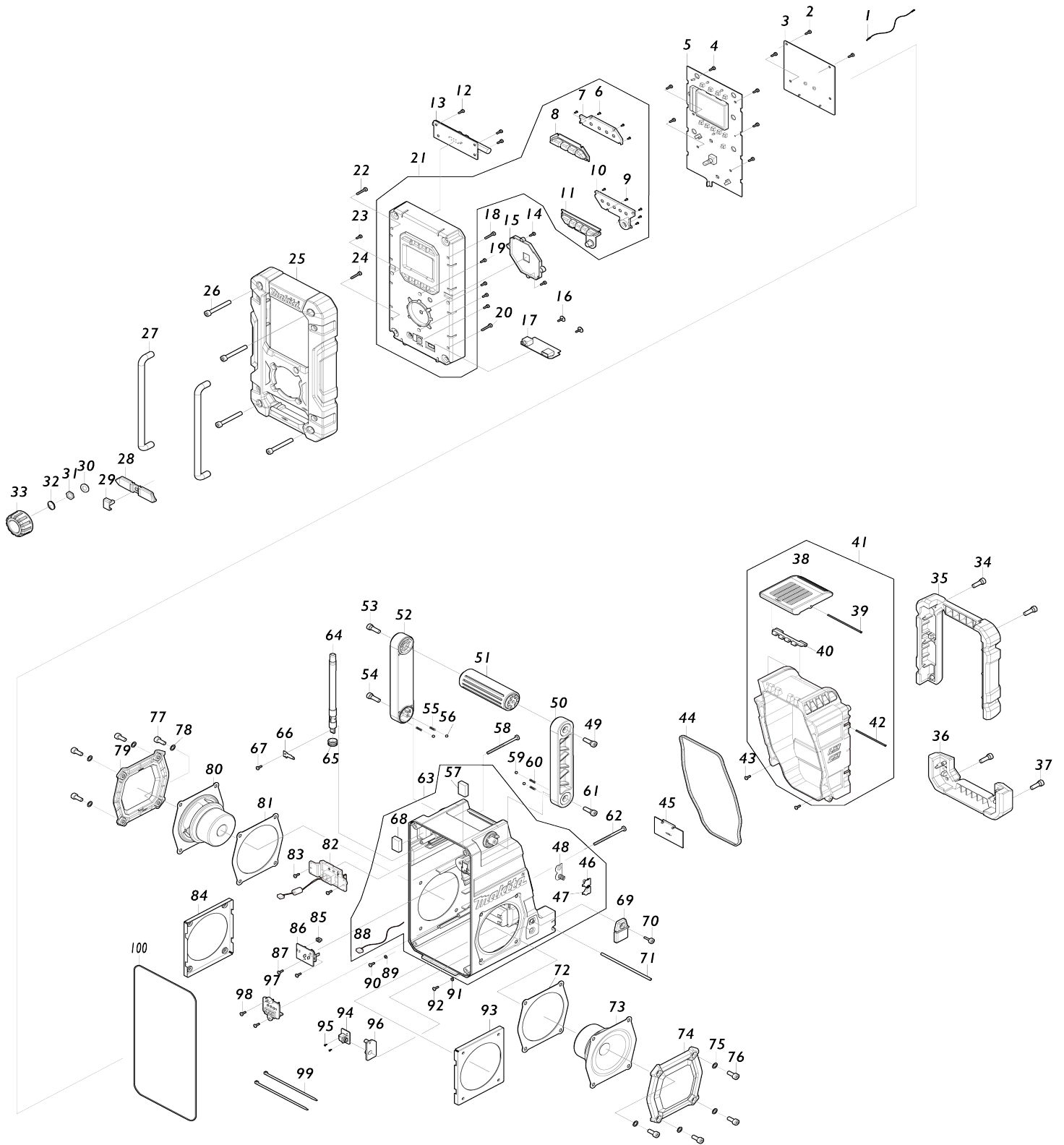


Model No.DMR108N JOB SITE RADIO



Model No.DMR108N JOB SITE RADIO

Numéro d'article	N ° de pièces	Description	Interchangeabilité	Q'ty	Nouvelle / ancienne	Note 1	Note 2
001	SE00000437	WIRE		1			
002	SE00000325	SCREW PTB 3X8(NI)		3			
003	SE00001058	PCB A ASS'Y		1			
004	SE00000325	SCREW PTB 3X8(NI)		6			
005	SE00001061	PCB C ASS'Y		1			
006	SE09090011	SCREW 1.7		4			
007	SE00000333	POWER BUTTON HOLDER		1			
008	SE00000334	POWER BUTTON		1			
009	SE09090011	SCREW 1.7		5			
010	SE00000336	PRESET BUTTON HOLDER		1			
011	SE00000337	PRESET BUTTON		1			
012	SE00000325	SCREW PTB 3X8(NI)		3			
013	SE00000339	PCB P ANT BAR ASS'Y		1			
014	SE00000325	SCREW PTB 3X8(NI)		2			
015	SE00000656	KNOB LENS HOLDER		1			
016	SE00000193	SCREW 3X10		2			
017	SE00000343	PCB P USB ASS'Y		1			
018	SE09064161	SCREW M4X16		1			
019	SE00000325	SCREW PTB 3X8(NI)		4			
020	SE09064161	SCREW M4X16		1			
021	SE00001063	FRONT CABINET ASS'Y		1			
D10		INC. 6-11					
022	SE09064161	SCREW M4X16		1			
023	SE00000325	SCREW PTB 3X8(NI)		1			
024	SE09064161	SCREW M4X16		1			
025	SE00000351	FRONT BUMPER		1			
026	SE00000160	SCREW PTHE6X47(CR)		4			
027	SE0338PC5Z	FRONT BAR		2			
028	SE00000355	JACK RUBBER COVER		1			
029	SE00000356	JACK COVER		1			
030	SE00000754	EN/SW WASHER		1			
031	SE00000755	EN/SW NUT		1			
032	SE21B1110A	ROTARY KNOB RING		1			
033	SE00000482	ROTARY KNOB (BLK)		1			
034	SE09176166	HEX SCREW M6X16		2			
035	SE00000357	BATTERY BUMPER		1			
036	SE00000359	REAR BUMPER		1			
037	SE09176166	HEX SCREW M6X16		2			
038	SE00000362	LOCKER COVER		1			
039	SE00000364	LOCKER FIXER PIN 73.5MM		1			
040	SE00000365	LOCK HINGER		1			
041	SE00001064	BATTERY COVER ASS'Y		1			
D10		INC. 38-40,42					
042	SE00000369	LOCKER FIXER PIN 64.5MM		1			
043	SE00000325	SCREW PTB 3X8(NI)		2			
044	SE00000371	BATTERY COVER PACKING		1			
045	SE0307PC5Z	BACK UP BATTERY COVER		1			

046	SE00000466	BATTERY CONTACT(+) 2100RA00700	1		
047	SE00000467	BATTERY CONTACT (-)2100PL00200	1		
048	SE021E9030	+/- BATTERY CONTACT ASS'Y	1		
049	SE00000176	SCREW PTHE6X20(CR)	1		
050	SE00000177	HANDLE HOLDER(R)	1		
051	SE00000179	HANDLE	1		
052	SE00000180	HANDLE HOLDER (L)	1		
053	SE00000176	SCREW PTHE6X20(CR)	1		
054	SE09176166	HEX SCREW M6X16	1		
055	SE00000184	SPRING	2		
056	SE09994007	STEEL BALL	2		
057	SE023PC020	EVA 25X18X5.5	1		
058	SE00000445	SCREW PTB 3X45(NI)	1		
059	SE09994007	STEEL BALL	2		
060	SE00000184	SPRING	2		
061	SE09176166	HEX SCREW M6X16	1		
062	SE00000445	SCREW PTB 3X45(NI)	1		
063	SE00001066	REAR CABINET ASS'Y	1		
D10		INC. 46-48,57,68,88			
064	SE00000395	RUBBER ANT 88-108(BLK)	1		
065	SE00000398	ROD ANT PACKING	1		
066	SE00000396	ROD ANT TERMINAL	1		
067	SE00000325	SCREW PTB 3X8(NI)	1		
068	SE023PC020	EVA 25X18X5.5	1		
069	SE00000403	DC RUBBER COVER	1		
070	SE00000404	SCREW PTHE 3X14(CR)	1		
071	SE021PC030	BATTERY COVER LOCKER	1		
072	SE00000406	SPEAKER PACKING	1		
073	SE00001068	RIGHT SPEAKER ASS'Y	1		
074	SE00000408	SPEAKER PANEL ASS'Y	1		
075	SE024J9040	PACKING	4		
076	SE9076146A	HEX SCREW M6X14	4		
077	SE9076146A	HEX SCREW M6X14	4		
078	SE024J9040	PACKING	4		
079	SE00000408	SPEAKER PANEL ASS'Y	1		
080	SE00001069	LEFT SPEAKER ASS'Y	1		
081	SE00000406	SPEAKER PACKING	1		
082	SE00001080	TERMINAL E ASS'Y	1		
083	SE00000325	SCREW PTB 3X8(NI)	2		
084	SE00000422	SPEAKER HOLDER	1		
085	SE00000430	SWITCH KNOB	1		
086	SE00001070	PCB D ASS'Y	1		
087	SE00000325	SCREW PTB 3X8(NI)	2		
088	SE00000587	LEAD WIRE W/CONNECTOR 170MM	1		
089	SE00000199	SILICON RUBBER WASHER	1		
090	SE00000325	SCREW PTB 3X8(NI)	1		
091	SE00000199	SILICON RUBBER WASHER	1		
092	SE00000325	SCREW PTB 3X8(NI)	1		
093	SE00000422	SPEAKER HOLDER	1		

094	SE00001071	PCB F ASS'Y (DC JACK)		1		
095	SE09090011	SCREW 1.7		2		
096	SE00000435	DC JACK HOLDER		1		
097	SE00001072	CXT TERMINAL ASS'Y		1		
098	SE00000325	SCREW PTB 3X8(NI)		2		
099	SE00000195	W/TIES 100MM		2		
100	SE024PC040	PACKING		1		
A01	SE00000101	AC ADAPTER		1		

Veuillez indiquer les pièces n ° lorsque votre commande.

Date d'impression 06/06/2024